

April 26, 2021

**RE: WASTEWATER SYSTEM IMPROVEMENTS
DELMONT, SOUTH DAKOTA
SPN #15186**

BID LETTING: WEDNESDAY, APRIL 28, 2021 @ 2:00 PM

ADDENDUM NUMBER 3

The following modifications are to be made to the plans and specifications for the Wastewater System Improvements Project.

Plan Sheet #5 – Grant of Access Map shall be deleted in its entirety and replaced with the attached updated Grant of Access map.

Plan Sheet #153 E1 – Lift Station Electrical Demolition, Plan Sheet #153 E2 – Lift Station Electrical Plan, and Plan Sheet #153 E3 – Lift Station Electrical Details dated February 26, 2021, shall be added to the plans as attached to this addendum.

Bid Form – Pages 8-13 shall be deleted in their entirety and replaced with the attached Pages 8-13. The following adjustments have been made to the Bid Form:

Bid Schedule "A" Item 13 "Remove and Dispose of Culvert" has been increased by 26 LF from 377 LF to 403 LF.

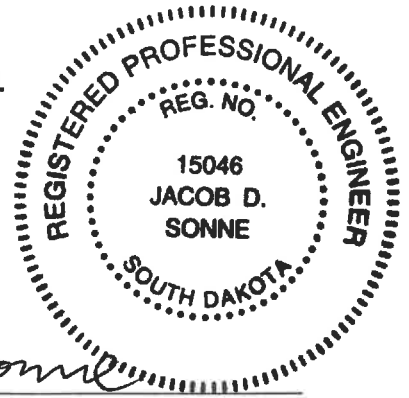
Bid Schedule "A" Item 14 "Remove, Salvage and Replace Culvert" has been decreased by 26 LF from 674 LF to 648 LF.

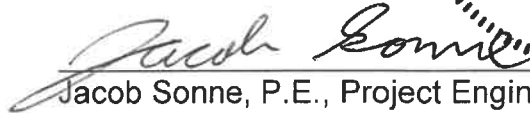
Bid Schedule "A" Item 46 "Furnish and Install 12" CMP" has been increased by 199 LF from 220 LF to 419 LF.

Bid Schedule "A" Item 70 "Furnish and Install 15" CMP" has been added. This bid item has a quantity of 32 LF.

Bid Schedule "B" Item 4 "Replace Air Release Valve" has been decreased by 1 EA from 4 EA to 3 EA. 2 EA air release valves are being replaced on the existing force main adjacent to the lagoon and 1 EA air release valve is being replaced in the valve pit.

All other items of the plans and specifications remain unchanged.




Jacob Sonne, P.E., Project Engineer
Schmucker, Paul, Nohr & Associates

The undersigned hereby acknowledges receipt of Addendum Number 3 to the plans and specifications for the *DELMONT WASTEWATER SYSTEM IMPROVEMENTS*.

FIRM NAME _____
BY _____
TITLE _____
DATE _____

ATTACH THIS SIGNED ADDENDUM NO. 3 TO THE BID FORM WHEN SUBMITTING.



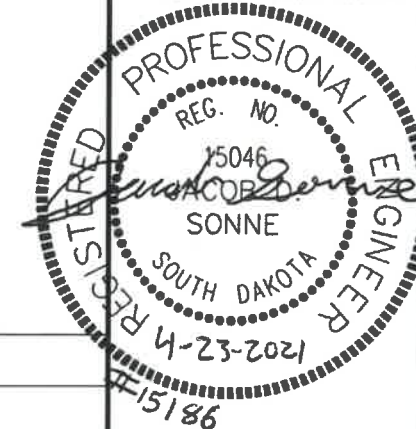
SPN
& Associates

Engineers - Planners - Surveyors

2100 North Sanborn Boulevard - P.O. Box 398
Mitchell, South Dakota 57301-0398
Phone: (605) 996-7761 - Fax: (605) 996-0015

Certificate

I hereby certify that this plan, specification, or report was prepared by me or under my direct supervision and that I am a duly Registered Professional Engineer under the laws of the State of South Dakota.



Revisions

4/23/21 Changes Per Additional Approved Access Revisions By RLA.

Plan Horiz. Scale: 1" = 400'

Drawn By: RLA

Checked By: JDS

Date: 02-26-2021

Project No.: 15186

Project Name:

**Wastewater
Improvements**

Located In:

**Delmont,
South Dakota**

Sheet Name:

Grant of Access Map

Sheet Number:

5

Total Sheets:

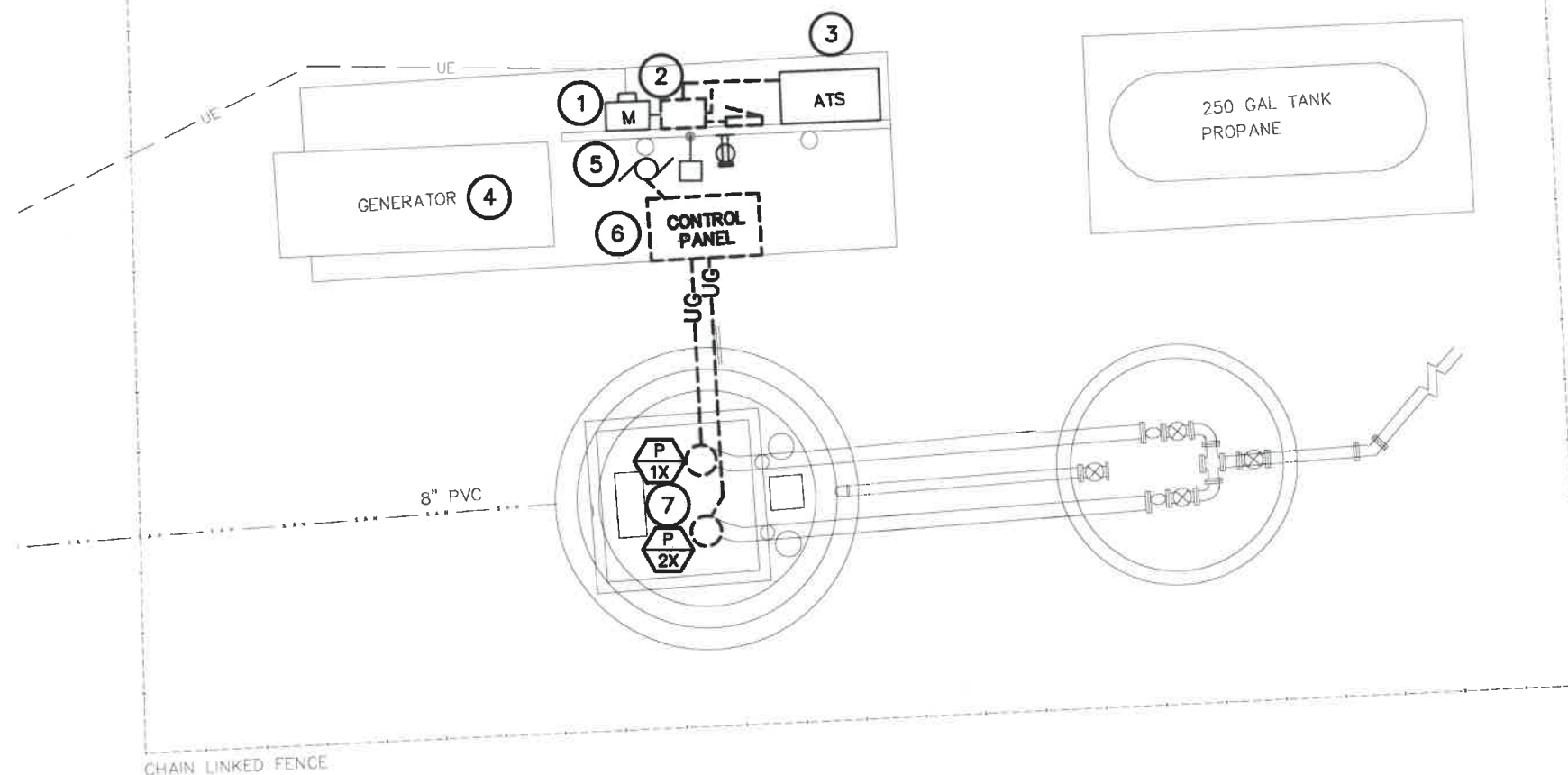
164



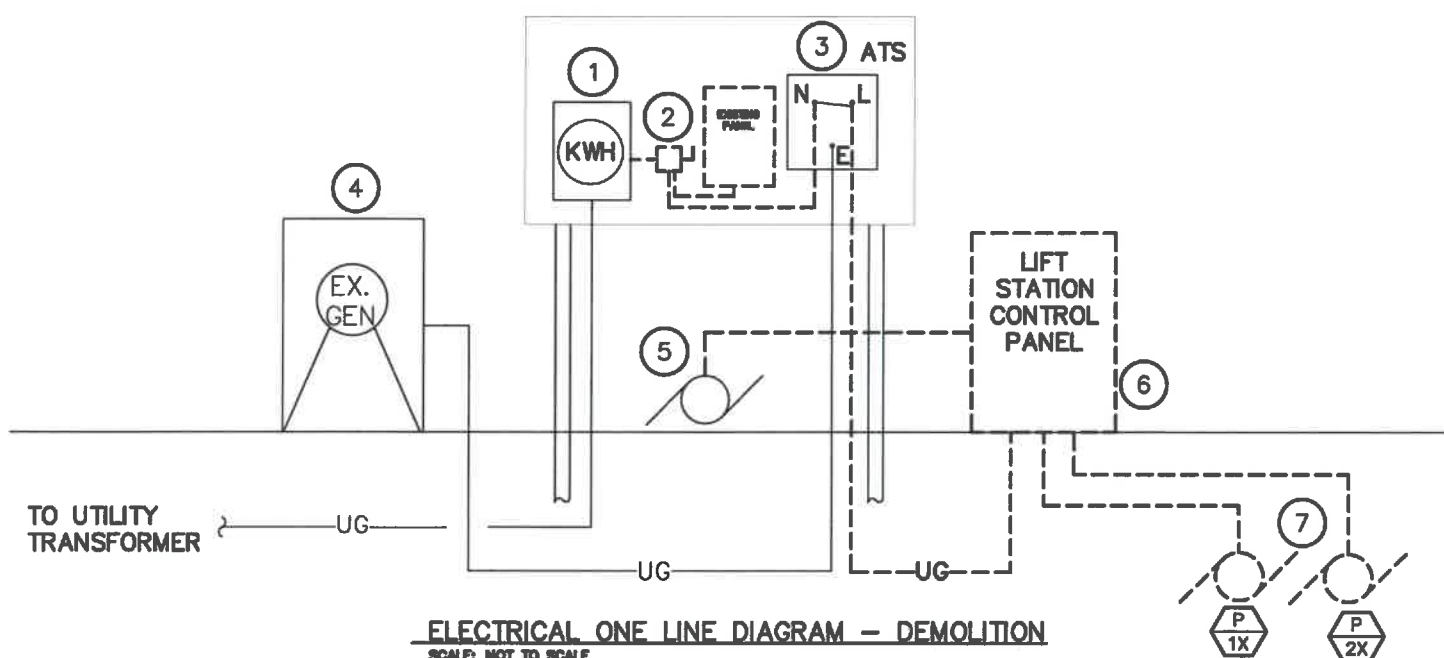
Avenue

401st





LIFT STATION - ELECTRICAL DEMOLITION
SCALE: 1/4" = 1'-0"



ELECTRICAL ONE LINE DIAGRAM - DEMOLITION
SCALE: NOT TO SCALE

MISCELLANEOUS NOTES:

- A. ELECTRICAL ITEMS SHOWN IN DARK DASHED LINES INDICATE EXISTING EQUIPMENT TO BE REMOVED. ELECTRICAL ITEMS SHOWN IN SOLID LIGHT LINES ARE EXISTING ITEMS TO REMAIN. ELECTRICAL ITEMS SHOWN IN SOLID DARK LINES ARE NEW ITEMS.

SPECIFIC ELECTRICAL NOTES - DEMOLITION:

1. EXISTING 200A UTILITY METER (120/240V, 3PH, DELTA SERVICE) TO REMAIN: NORTH WESTERN ENERGY (KYLE, 605-630-4183). COORDINATE ALL SERVICE REQUIREMENTS WITH UTILITY. COORDINATE ALL SERVICE OUTAGES WITH OWNER PRIOR TO WORK BEING PERFORMED.
2. EXISTING 100A/3P FUSED DISCONNECT AND LOAD CENTER TO BE REMOVED AND REPLACED WITH A NEW PANELBOARD PER NEW WORK.
3. EXISTING 125A ATS (AUTOMATIC TRANSFER SWITCH) TO REMAIN. REMOVE EXISTING FEEDER FROM DISCONNECT AND RE-FEED PER NEW WORK.
4. EXISTING 20 KW LP GAS GENERATOR (120/240V, 3PH, DELTA) TO REMAIN. REMOVE EXISTING POWER FEEDS TO BATTERY CHARGER AND JACKET HEATER AND RE-FEED PER NEW WORK.
5. EXISTING AERATION PUMP TO REMAIN. DISCONNECT AND REMOVE EXISTING POWER FEED AND RE-FEED PER NEW WORK.
6. EXISTING LIFT STATION CONTROL PANEL TO BE REMOVED AND REPLACED PER NEW WORK. REMOVE EXISTING WIRING BACK TO ATS. RETAIN EXISTING CONDUIT TO FEED NEW CONTROL PANEL PER NEW WORK.
7. EXISTING 3HP LIFT STATION PUMPS TO BE REMOVED. REMOVE EXISTING POWER AND CONTROL WIRING BACK TO CONTROL PANEL. RETAIN EXISTING UNDERGROUND CONDUITS TO FEED NEW SUMP PUMPS PER NEW WORK.



SPN
& Associates

Engineers - Planners - Surveyors

2100 North Sanborn Boulevard - P.O. Box 398
Mitchell, South Dakota 57301-0398
Phone: (605) 996-7761 - Fax: (605) 996-0015

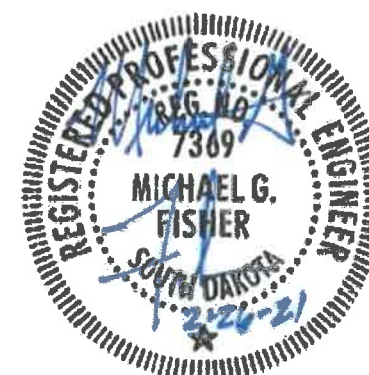
Plan Horiz. Scale:	None
Drawn By:	TB
Checked By:	MF
Date:	02-26-2021
Project No.:	15186

Project Name:
**Wastewater
Improvements**

Located in:
**Delmont,
South Dakota**

Sheet Name:
**LIFT STATION
ELECTRICAL DEMOLITION**

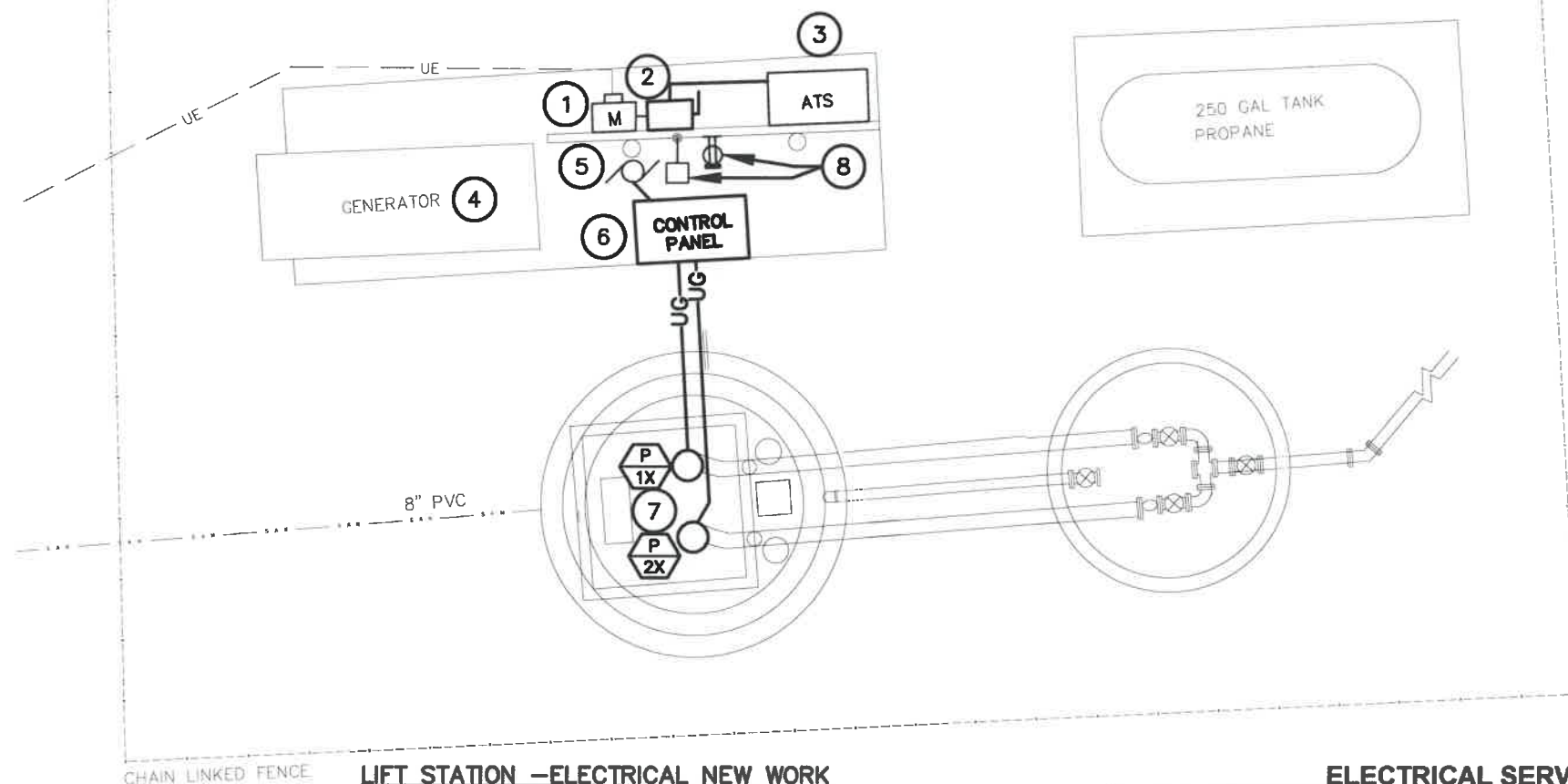
Sheet Number:	Total Sheets:
153 E1	164



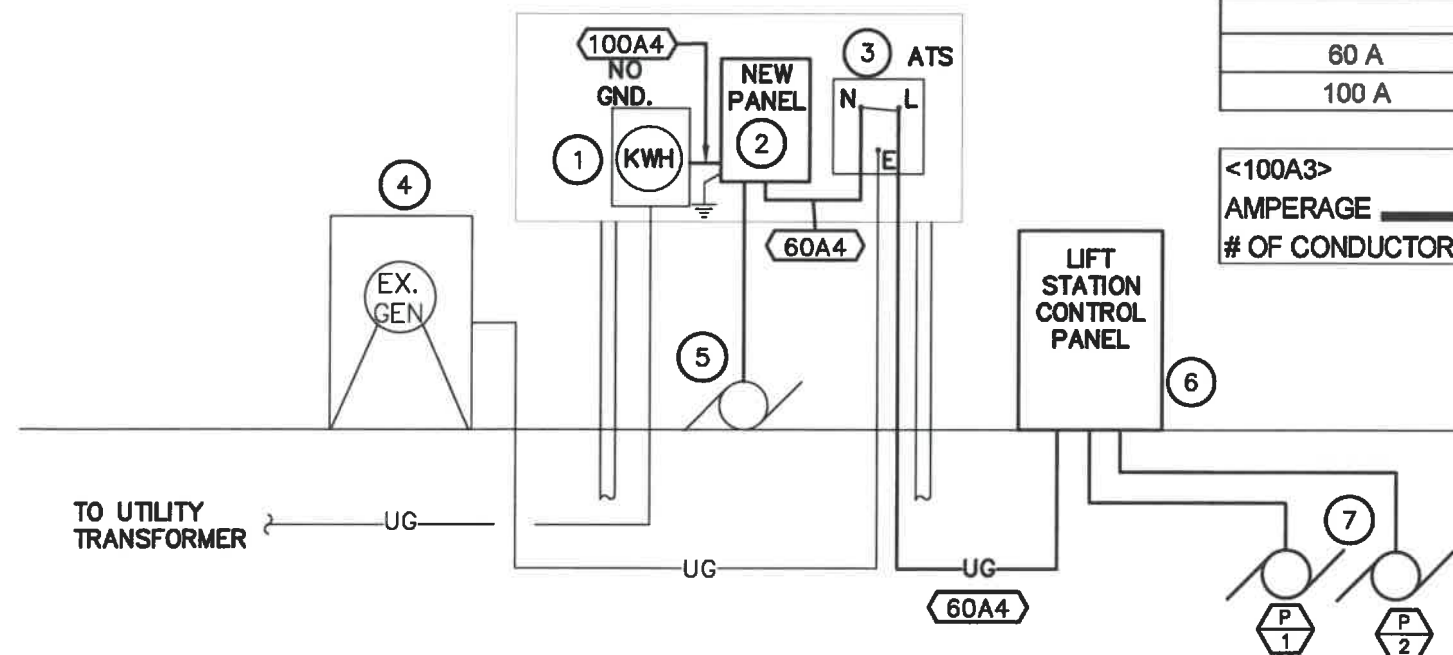
WPE# BS21012

WPE WEST PLAINS ENGINEERING, INC.

4609 SOUTH TECHLINK CIRCLE ■ SIOUX FALLS, SD 57106
PHONE: (605) 362-3753 ■ FAX: (605) 362-3759
www.westplainsengineering.com
RAPID CITY, SD ■ SIOUX FALLS, SD ■ CASPER, WY ■ CEDAR RAPIDS, IA ■ BISMARCK, ND



LIFT STATION - ELECTRICAL NEW WORK
SCALE: 1/4" = 1'-0"



ELECTRICAL ONE LINE DIAGRAM - NEW WORK
SCALE: NOT TO SCALE

ELECTRICAL SERVICE/FEEDER SCHEDULE

SERVICE/FEEDER AMPACITY	3 WIRE SERVICE/FEEDER	4 WIRE SERVICE/FEEDER
60 A	1"C, 3#4 & 1#10 GND	1"C, 4#4 & 1#10 GND
100 A	1 1/2"C, 3#1 & 1#8 GND	1 1/2"C, 4#1 & 1#8 GND

<100A3> AMPERAGE	100A	3
# OF CONDUCTORS		

MISCELLANEOUS NOTES:

- ELECTRICAL ITEMS SHOWN IN DARK DASHED LINES INDICATE EXISTING EQUIPMENT TO BE REMOVED. ELECTRICAL ITEMS SHOWN IN SOLID LIGHT LINES ARE EXISTING ITEMS TO REMAIN. ELECTRICAL ITEMS SHOWN IN SOLID DARK LINES ARE NEW ITEMS.

SPECIFIC ELECTRICAL NOTES - NEW WORK:

- EXISTING 200A UTILITY METER (120/240V, 3PH, DELTA SERVICE) TO REMAIN: NORTH WESTERN ENERGY (KYLE, 605-630-4183). COORDINATE ALL SERVICE REQUIREMENTS WITH UTILITY. COORDINATE ALL SERVICE OUTAGES WITH OWNER PRIOR TO WORK BEING PERFORMED.
- NEW SERVICE ENTRANCE RATED PANELBOARD; FEED FROM EXISTING UTILITY METER. RE-CONNECT TO EXISTING SERVICE GROUNDING ELECTRODE AS REQUIRED.
- EXISTING 125A ATS (AUTOMATIC TRANSFER SWITCH) TO REMAIN. RE-FEED NORMAL POWER FEED FROM NEW PANELBOARD.
- EXISTING 20KW LP GAS GENERATOR (120/240V, 3PH, DELTA) TO REMAIN. RE-FEED BATTERY CHARGER AND JACKET HEATER FROM 20A/1P BREAKERS NOTED IN NEW PANELBOARD.
- AERATION PUMP, RE-FEED FROM THE 20A/1P BREAKER NOTED IN NEW PANELBOARD.
- NEW LIFT STATION CONTROL PANEL PROVIDED BY OTHERS, INSTALLED BY ELECTRICAL CONTRACTOR. COORDINATE INSTALLING REQUIREMENTS WITH PANEL PROVIDER. PROVIDE NEW FEED IN EXISTING CONDUIT FROM NEW PANELBOARD. PROVIDE CONTROL WIRING TO ATS TO PROVIDE NOTIFICATION WHEN NORMAL POWER IS LOST.
- NEW 5HP LIFT STATION PUMPS. INSTALL NEW CONTROL (TRANSDUCER AND FLOAT) AND POWER WIRING FROM EACH PUMP TO LIFT STATION CONTROL PANEL IN EXISTING CONDUITS. CABLING SUPPLIED WITH PUMPS.
- RE-FEED EXISTING EXTERIOR LIGHT AND RECEPTACLES AS NOTED IN NEW PANELBOARD.



SPN
& Associates

Engineers - Planners - Surveyors

2100 North Sanborn Boulevard - P.O. Box 398
Mitchell, South Dakota 57301-0398
Phone: (605) 996-7761 - Fax: (605) 996-0015

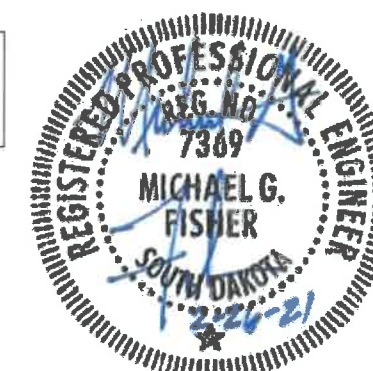
Plan Horiz. Scale: None
Drawn By: TB
Checked By: MF
Date: 02-26-2021
Project No.: 15186

Project Name:
**Wastewater
Improvements**

Located in:
**Delmont,
South Dakota**

Sheet Name:
**LIFT STATION
ELECTRICAL PLAN**

Sheet Number: 153 E2
Total Sheets: 164



WPE# BS21012

WPE WEST PLAINS ENGINEERING, INC.

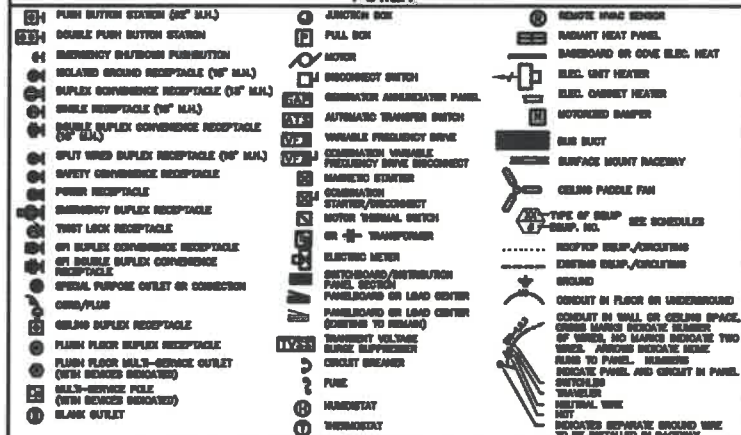
4609 SOUTH TECHLINK CIRCLE ■ SIOUX FALLS, SD 57106
PHONE: (605) 362-3753 ■ FAX: (605) 362-3759
www.westplainsengineering.com
RAPID CITY, SD ■ SIOUX FALLS, SD ■ CASPER, WY ■ CEDAR RAPIDS, IA ■ BISMARCK, ND

ELECTRICAL SYMBOLS

THESE SYMBOLS CONSTITUTE A STANDARD LIST; NOT ALL SYMBOLS MAY APPEAR ON THIS PROJECT.

ALL MOUNTAIN HEIGHTS ARE TO CENTER OF BECKE ABOVE FINISH FLOOR. MOUNTAIN HEIGHTS LOCATED ON ARCH WALL ELEVATIONS OF
AS NOTED SPECIFICALLY ON THE DRAWINGS OR IN THE SCHEDULES SHALL HAVE A MINIMUM OF 10" MOUNTAIN HEIGHTS LISTED BELOW.

POWER



2100 North Sanborn Boulevard - P.O. Box 398
Mitchell, South Dakota 57301-0398
Phone: (605) 996-7761 - Fax: (605) 996-0015

NEW PANEL		VOLTS: 120/ 240		PHASE: 3		WIRE: 4		MAIN CAP. 100		AMPERES				
		AIC RATING 10,000		GROUND BAR, TYPEWRITTEN PANEL DIRECTORY, SERVICE RATED, NEMA 3R										
		MOUNTING: SURFACE		FEEDER SIZE: SEE RISER				MAIN CONNECTION: MCB						
CCT NO	ITEM FED	LOAD WATTS	WIRE SIZE	CIRCUIT BREAKER			NEUTRAL	CIRCUIT BREAKER			WIRE SIZE	LOAD WATTS	ITEM FED	CCT NO
				AMPS	POLES	FRAME		FRAME	POLES	AMPS				
1	LIFT STATION CONTROL PANEL	5,542	6				A	E	1	20	12	1,000	EXISTING AERATION PUMP	2
3		5,542	6	60	3	E	B	E	1	20	12	900	EXISTING GEN. BATTERY CHARGER	4
6		5,542	6				C	E	1	20	12	1,200	EXISTING GEN. JACKET HEATER	6
7	EXISTING EXTERIOR LIGHT	200	12	20	1	E	A	E	1	20	12	360	EXISTING EXTERIOR RECEPTACLES	8
9	SPARE			20	1	E	B	E	1	20			SPARE	10
11	SPACE						C						SPACE	12

STARTER AND DISCONNECT SCHEDULE

EQUIP NO.	EQUIPMENT DESCRIPTION	VOLTS/ PHASE	HP OR WATTS	FLA	MCA	OCPD SIZE	EQUIPMENT FEEDER	DISCONNECT AT EQUIP.	NOTES
P-1	SUMP PUMP	240/3	5.4 HP	15.2	19.0	30 A	SEE NOTES	INTEGRAL TO CONTROL PANEL	1
P-2	SUMP PUMP	240/3	5.4 HP	15.2	19.0	30 A	SEE NOTES	INTEGRAL TO CONTROL PANEL	1

NF = NON-FUSED SSS = BUSSMAN FUSED SWITCH OCPD = OVERCURRENT PROTECTIVE DEVICE 4X = NEMA 4X TYPE WP = WEATHERPROOF

FLA = FULL LOAD AMPS MCA = MINIMUM CIRCUIT AMPS 1P SWITCH = 1 POLE TOGGLE SWITCH FE = FURNISHED WITH EQUIPMENT

NOTES:

1. POWER AND CONTROL WIRING TO BE PROVIDED WITH EQUIPMENT. ELECTRICAL CONTRACTOR TO INSTALL AND WIRING TO CONTROL CABINET.

ELECTRICAL ABBREVIATIONS			
A STANDARD LIST, NOT ALL WORDS APPEAR IN THESE DRAWINGS.			
SEE EXPLANATION SECTION "SYMBOLS AND NOTATION" FOR ADDITIONAL INFORMATION AND REQUIREMENTS.			
A or AMP	AMPERE	LA	LIGHTING ARRESTOR
A/C	AC COORDINATOR	LT	LIFT
A/E or AE	ARCHITECT & ENGINEER	LVB	LIGHTING
ac	ACROSS COUNTER	LTS	LIGHTS
ADA	ALTERNATING CURRENT	MD	MEDICAL EQUIPMENT CONTRACTOR
ADU	ADDITIONAL WITH INSULATED ACT	MOB	MAIN CIRCUIT BREAKER
APF	ABOVE FRESH FLOOR	MOC	MOTOR CONTROL CENTER
APB	ABOVE FRESH GRADE	MOM	THOUSAND CIRCULAR MILS
AP or APC	ARC FAULT CIRCUIT INTERRUPTER	MSP	MAIN DISTRIBUTION PANEL
ARM	AUTHORITY HAVING JURISDICTION	MTH	METRIC
AS	AS INSTALLED UNIT	MV	MAIN FUSELITE SWITCH
ASB	AMPERES INTERRUPTING CURRENT	MH	METAL HALIDE
AL	ALUMINUM	MLO	MAIN LBS ONLY
ARM	ARMATURE	MIB	MAIN SWITCHBOARD
AS	AUTOMATIC SENSORS	MTO	MOTOR THERMAL SWITCH
ASB	AMERICAN WIRE GAUGE	MV	MERCURY VAPOR
bc	BELOW COUNTER	MW	MICROWAVE
BC	BELOW COUNTER	NA or N/A	NOT APPLICABLE
BN	BUSMETER, NOOP OPER	NCL	NOTICALLY CLOSED
BL	BLEACHER ELECTRIC OPERATOR	NED	NATIONAL ELECTRICAL CODE
BO or BO	BOARD	NEMA	NATIONAL ELECTRICAL MANUFACTURERS ASSOCIATION
BUN	BLAST UNIT HEATER	NEI, NEUT or N	NEUTRAL
C or COND	CONDUIT	NO	NORMALLY OPEN
C/B or CB	CIRCUIT BREAKER	OFF, OF, or OFC	OFFICE
CAT	CATEGORY	OH	OVERHEAD
CUT or CXT	CIRCUIT	OSD	OVERHEAD DOOR
CM	CARBON MONOXIDE SENSOR	PA	PUBLIC ADDRESS
CO	CARBON MONOXIDE	PB	PUSH BUTTON
COMB	COMBINATION	PH	PHONE
CONF	CONFERENCE	PLB	PLUMBING
CP	CABLE PROTECTION	PHL	PANEL
CPC	CABLE TERMINATION CABINET	PR or P	PAN
Cu or CU	COPPER	PRV	POWER ROOF VENTILATOR
CU	CONDENSING UNIT	PS	PULL SWITCH
CUH	CABINET UNIT HEATER	PSB	PROTECTION SCREEN
DC	DIRECT CURRENT	PZ	PAN TILT ZOOM
DC	DISTRIBUTION CABINET	PVC	POLYVINYL CHLORIDE
DP	DISTRIBUTION PANEL	PUR	POWER
DRG	DRYER	RCP	REFLECTED CEILING PLAN
ESP	EMERGENCY	RED or REDPT	RECEPTACLE
EM or EMH	EMERGENCY	REF or REFV	REFRIGERATOR
EN	ELECTRIC HEAT	RH	RADIANT HEAT
ELC	ELECTRIC HEAT	RH	RAMEX HOOD
ELD	ELECTRIC HEAT	RL	RELAY
EM or EMH	EMERGENCY	RMS	ROOT MEAN SQUARE
ENT	ELECTRICAL METALLIC TUBING	SC	SHORT CIRCUIT CURRENT
ENT	ELECTRICAL, NON-METALLIC TUBING	SD	SIGNS DETECTOR
ENH	ELECTRIC UNIT HEATER	SEF	SEMI-RECEPTACLE
ENH	ELECTRIC WATER COOLER	SFT	SAFETY
EX	EXPOSURE	SHD	SHIELD OR SHIELDED
EXP	EXPLOSION PROOF	SHL	SIGNAL
F or FUS	FUSE OR FUSELITE	SHR	SURFACE MOUNT RACEWAY
FA	FIRE ALARM	SH	SOLD NEUTRAL
FAP	FIRE ALARM ANNUNCIATOR PANEL	SHP	SUMP PUMP
FACP	FIRE ALARM CONTROL PANEL	SPEC	SPECIFICATIONS
FBO	FURNISHED BY OTHERS	SPK	SPEAKER
FL, FLU or FLUR	FLUORESCENT	SPR	SPRINT WIRE RECEPTACLE
FLA	FULL LOAD AMPERES	SW	SWITCH
FMR	FULL VOLTAGE, NON-REVERSING	SWD	SWITCH BOARD
FVR	FULL VOLTAGE, REVERSING	TC	TEMPERATURE CONTROL
GC	GENERAL CONTRACTOR	TC	TELEPHONE CABINET
GD	GARAGE DISPOSAL	TOC	TEMPERATURE CONTROL CONTRACTOR
GR	GRINDER	TR	TRAP
GFI or GFC	GROUND FAULT CIRCUIT INTERRUPTER	TL	TRUCK LIFT
GND	GALVANIZED AND CONDUIT	TR	TRANSFORMER
GND or GND	GROUND	TV	TELEPHONE TERMINATION BOARD
H or AC	HEATING & AIR CONDITIONING	TV	TELEVISION
H or V	HEATING & VENTILATION	TWB	TRANSFORMER VOLTAGE SURGE
HA	HANDICAP ACCESS DOOR	TWP	TRANSFORMATION
HD	HAND DRYER	UB	UNDERGROUND
HD	HIGH INTENSITY DISCHARGE	UH	UNIT HEATER
HP	HORSE POWER	UV	UNIT VENTILATOR
HPS	HIGH PRESSURE SODIUM	V	VOLT
HTR	HEATING	WFO	VARIABLE FREQUENCY DRIVE
HVAC	HEATING, VENTILATION & AIR CONDITIONING	W	WATT
HZ	HERTZ (CYCLES/SEC)	W/O	WITHOUT
IC	INTERRUPTING CURRENT	W/W	WEATHERPROOF
ISO	ISOLATED GROUND RECEPTACLE	WR or HD	WATER
ISO	INTERMEDIATE METAL CONDUIT	WS	WINDSHIELD
ISO	ISOLATED	WTR	WATER
ISO	ISOLATED OR ISOLATION	WTR	WATER
J or J-BOX	JUNCTION BOX	Y	WYE CONNECTION
KOML	THOUSAND CIRCULAR MILS	φ	PHASE
KV	KILOVOLT	Δ	DELTA
KVA	KILOVOLT - AMPERE		
KVAR	KILOVOLT - AMPERE REACTIVE		
KW	KILOWATT		
KWH	KILOWATT - HOUR		



WPE# BS21012

WPE WEST PLAINS ENGINEERING, INC.

4609 SOUTH TECHLINK CIRCLE ■ SIOUX FALLS, SD 57106
PHONE: (605) 362-3753 ■ FAX: (605) 362-3759

www.westplainsengineering.com

Project Name:

Wastewater Improvements

Located in:

**Delmont,
South Dakota**

Sheet Name:

LIFT STATION ELECTRICAL DETAILS

Sheet Number:	Total Sheets:
---------------	---------------

153 E3	164
--------	-----

Bid Schedule A - Wastewater Collection System Improvements

Item #	Description	Quantity	Unit Price	Total Price
1	Mobilization	1 LS		
2	Remove and Dispose of Existing Manhole	47 EA		
3	Remove, Salvage and Replace Street Sign	1 EA		
4	Remove, Salvage and Replace Fence	66 LF		
5	Remove and Dispose of Tree (12" to 18" Diameter)	2 EA		
6	Remove and Dispose of Tree (18" to 24" Diameter)	2 EA		
7	Remove and Dispose of Tree (+36" Diameter)	2 EA		
8	Remove and Dispose of Asphalt/Blotter Surface	4,177 SY		
9	Mill ,Salvage, and Stockpile Asphalt and Gravel Base Course	1,320 TN		
10	Remove Salvage, and Replace Gravel Surfacing	1,640 TN		
11	Remove and Dispose Contaminated Soil	50 TN		
12	Remove and Dispose of Concrete	303 SY		
13	Remove and Dispose of Culvert	403 LF		
14	Remove, Salvage and Replace Culvert	648 LF		
15	8" Sanitary Sewer Pipe (0ft-8ft)	3,312 LF		
16	8" Sanitary Sewer Pipe (0ft-8ft) Alley	93 LF		
17	8" Sanitary Sewer Pipe (8ft-10ft)	2,850 LF		
18	8" Sanitary Sewer Pipe (8ft-10ft) Alley	799 LF		
19	8" Sanitary Sewer Pipe (10ft-12ft)	2,907 LF		
20	8" Sanitary Sewer Pipe (10ft-12ft) Alley	2,668 LF		

Bid Schedule A - Wastewater Collection System Improvements

Item	Description	Quantity	Unit Price	Total Price
21	8" Sanitary Sewer Pipe (12ft-14ft)	2,206 LF		
22	8" Sanitary Sewer Pipe (12ft-14ft) Alley	1,216 LF		
23	8" Sanitary Sewer Pipe (14ft-16ft)	363 LF		
24	Clean, Inspect, and Pre-rehabilitation Televising of Sewer	2,396 LF		
25	Cut Protruding Tap, Offset Joints, Mineral Deposits, etc.	9 EA		
26	8" Cured-in-Place Pipe Liner	2,396 LF		
27	Sewer Service Connection to 8" Liner	20 EA		
28	Post TV Inspection of Sewer	16,414 LF		
29	Sanitary Sewer Manholes to 8 Feet Depth	52 EA		
30	Seal Existing Manhole	1.0 EA		
31	Sanitary Manhole Inside Drop Assembly	3 EA		
32	Additional Depth Sanitary Sewer Manhole	128.1 VF		
33	Connect to Existing 8" Sewer	19 EA		
34	Plug Existing Manhole Invert	2 EA		
35	Cap 4" Sanitary Pipe	7 EA		
36	8"x4" Sanitary Sewer Wyes	110 EA		
37	Tracer Wire Access Box	128 EA		
38	Connect to Existing Sewer Service	127 EA		
39	4" Sanitary Sewer Service Pipe	2,193 LF		
40	4" Sanitary Sewer Service Pipe (Alley)	577 LF		

Bid Schedule A - Wastewater Collection System Improvements

Item	Description	Quantity	Unit Price	Total Price
41	6" Water Main	250 LF		
42	2" Water Service Line	100 LF		
43	Exploratory Digging	5 HR		
44	Bypass Pumping	1 LS		
45	Bypass Pumping (Lining)	1 LS		
46	Furnish and Install 12" CMP	419 LF		
47	Furnish and Install 18" CMP	40 LF		
48	4" Concrete Sidewalk	86 SF		
49	6" PCC Driveway Pavement	60 SY		
50	6" Concrete Valley Gutter	55 SY		
51	Unclassified Excavation (Ditch)	360 CY		
52	Unclassified Excavation (Street)	4,930 CY		
53	3" Gravel Surfacing (Alley)	1,400 TN		
54	6" Gravel Surfacing	1,420 TN		
55	Gravel Base Course	2,320 TN		
56	Salvaged Asphalt and Gravel Mix	1,320 TN		
57	5" Asphalt Surfacing	350 TN		
58	3" Asphalt Surfacing	1,300 TN		
59	Geotextile Separator Fabric	800 SY		
60	Adjust Valve Box to Grade	2 EA		

Bid Schedule A - Wastewater Collection System Improvements

Item	Description	Quantity	Unit Price	Total Price
61	Silt Fence	260 LF		
62	Salvage and Replace Topsoil	6,550 SY		
63	Type III Barricade	20 EA		
64	Traffic Control	149 SF		
65	Miscellaneous Traffic Control	1 LS		
66	Main Street Detour	155 SF		
67	284th Street Detour	89 SF		
68	Erosion Control	1 LS		
69	Seed, Fertilize, and Mulch	26,480 SY		
70	Furnish and Install 15" CMP	32 LF		

Total For Bid Schedule A - Wastewater Collection System Improvements

Items 1 - 70 Inclusive _____

Bid Schedule B - Lift Station Rehabilitation

Item #	Description	Quantity	Unit Price	Total Price
1	Mobilization	1 LS		
2	Replace Pumps	1 LS		
3	Replace Controls	1 LS		
4	Replace Air Release Valve	3 EA		
5	Prepare and Coat Exposed Steel Surfaces	1 LS		
6	Electrical Wiring and Equipment	1 LS		
7	Incidental Construction Items	1 LS		

Total For Bid Schedule B - Lift Station Rehabilitation Items 1 - 7 Inclusive _____

EJCDC® C-410, Bid Form for Construction Contracts.

Deletions by Engineer are indicated by strike through, Additions are indicated by underline

Copyright © 2013 National Society of Professional Engineers, American Council of Engineering Companies,
and American Society of Civil Engineers. All rights reserved. Page 11

Bid Schedule C - Wastewater Treatment System Improvements

Item #	Description	Quantity	Unit Price	Total Price
1	Mobilization	1 LS		
2	Remove and Dispose Existing Interpond Piping	1 LS		
3	Remove and Dispose Existing Fence	2,360 LF		
4	Remove and Dispose Existing Pond Manhole	2 EA		
5	Remove, Stockpile, and Replace Topsoil	890 CY		
6	Pond Inlet Manhole	1 EA		
7	Pond Inlet Structure	1 EA		
8	Pond Outlet Structure	1 EA		
9	8" Ductile Iron Pipe	82 LF		
10	4" Ductile Iron Pipe	4 LF		
11	8" Plug Valve	2 EA		
12	8" MJ Tee	3 EA		
13	8" MJ 90° Bend	1 EA		
14	8"x4" MJ Reducer	1 EA		
15	4" MJ 90° Bend	2 EA		
16	Seepage Collar	1 EA		
17	Sludge Removal	2,100 CY		
18	Sludge Land Application	2,100 CY		
19	Pond Depth Indicator	2 EA		
20	Install Riprap Furnished by Town	1,200 TN		

Bid Schedule C - Wastewater Treatment System Improvements

Item	Description	Quantity	Unit Price	Total Price
21	Furnish and Install Class A Riprap	1,555 TN		
22	Fabric Filter	4,300 SY		
23	Unclassified Excavation	355 CY		
24	Place Borrowed Fill Material	975 CY		
25	Inner Pond Dike Shaping	1,490 LF		
26	Install Woven Wire Fencing	2,360 LF		
27	3-Post Fence Panel	2 EA		
28	5-Post Fence Panel	6 EA		
29	Install Warning Sign	5 EA		
30	12' Pipe Gate	1 EA		
31	Transfer Pumping	1 LS		
32	Bypass Pumping	1 LS		
33	Seed, Fertilize, and Mulch	3,420 SY		

Total For Bid Schedule C - Wastewater Treatment System Improvements

Items 1 - 33 Inclusive _____