

March 12, 2021

**RE: DAILEY DRIVE LIFT STATION
MITCHELL, SOUTH DAKOTA
SPN #15405**

BID LETTING: WEDNESDAY, MARCH 17, 2021 @ 1:30 PM

ADDENDUM NUMBER 1

The following modifications are to be made to the plans and specifications for the Dailey Drive Lift Station Project.

Section C-800, Supplementary Conditions, Paragraph SC-6.05.A:

Delete the last sentence of Paragraph SC-6.05.A.

Section 26 32 13, Packaged Engine Generator System, Paragraph 1.06 B:

Add Generac as an approved generator manufacturer.

Section 33 14 17, Water Service Laterals, Paragraph 2.09 shall be added:

2.09 YARD HYDRANTS

- A. Yard hydrants shall be dry barrel types composed of galvanized steel piping. The hydrant shall have a 3/4" brass male hose nozzle.
- B. Yard hydrants shall have a bury depth of 6 feet.
- C. Each hydrant shall have one or more drain holes to drain the barrel. Construction shall be such that the drain holes will be closed when the valve is open and open when the valve is closed.
- D. Yard hydrants shall be Merrill Manufacturing M-2000, Kupferle Corn King #903 or approved equal.

Section 33 31 00, Sanitary Sewer Piping, Paragraph 2.11 shall be added:

2.11 PVC LATERAL PIPE

- A. PVC lateral pipe shall be IPS SDR 21 conforming to the applicable requirements of Paragraph 2.01.

Section 33 31 24, Sanitary Sewer Valves, Paragraph 2.06 shall be added:

2.06 AIR RELEASE VALVE

- A. Combination air valves shall release accumulations of air at high points within a pipeline by exhausting large volumes of air as the pipeline is being filled, and then by releasing accumulated pockets of air while the pipeline is in operation and under pressure. Combination air valves shall also be designed to permit large volumes of air to enter the pipeline during pipeline drainage.
- B. The valve shall operate through a compound lever system that will seal both the pressure orifice and the air and vacuum orifice simultaneously. This lever system shall permit an orifice to release an accumulation of air from the valve body. The valve body shall be cast iron. The internal linkage and float shall be stainless steel.
- C. Valves which operate with the air and vacuum valve disc held in a cradle with slots through which the air must flow will not be acceptable.
- D. The air valve shall be Crispin Multiplex Manufacturing Company Model #USL20 (2" NPT x 1" NPT) with backflushing attachments or approved equal.
- E. Air Relief Valve Accessories
 - 1. Threaded fittings and nipples on the inlet side of the valve shall be composed of brass.
 - 2. Service saddle and corporation stop shall be supplied as specified in Section 33 14 17.
 - 3. Fittings and pipe on the discharge side of the valve shall be composed of threaded and/or solvent welded schedule 40 PVC.
 - 4. All valves and accessories are to be installed in locations as shown in the Drawings and shall be installed in accordance with the manufacturer's instructions. The exact location of valve and accessories is to be field determined and approved by the Engineer prior to installation.
 - 5. The outlet of the air release valve shall be piped with PVC pipe and fittings to the bottom of the manhole or as directed by the Project Representative.
- F. Air Relief Valve Manhole Casting
 - 1. Manhole castings for the air release manholes shall be frost free with 2" insulation pad Model NF-1758 by Neenah Foundry or approved equal.

Section 33 32 13, Packaged Wastewater Pumping Station, Paragraph 2.01 A:

Add Sulzer (ABS) Model XFP100 E CB1 (dry pit) as approved.

Plan Sheet 31:

Note that the diameter of the steel dry pit shall be 11 feet.

Plan Sheet 42:

Replace Plan Sheet 42 with the attached detail.

All other items of the plans and specifications remain unchanged.



Camden A. Hofer

Camden A. Hofer, Project Engineer
Schmucker, Paul, Nohr & Associates

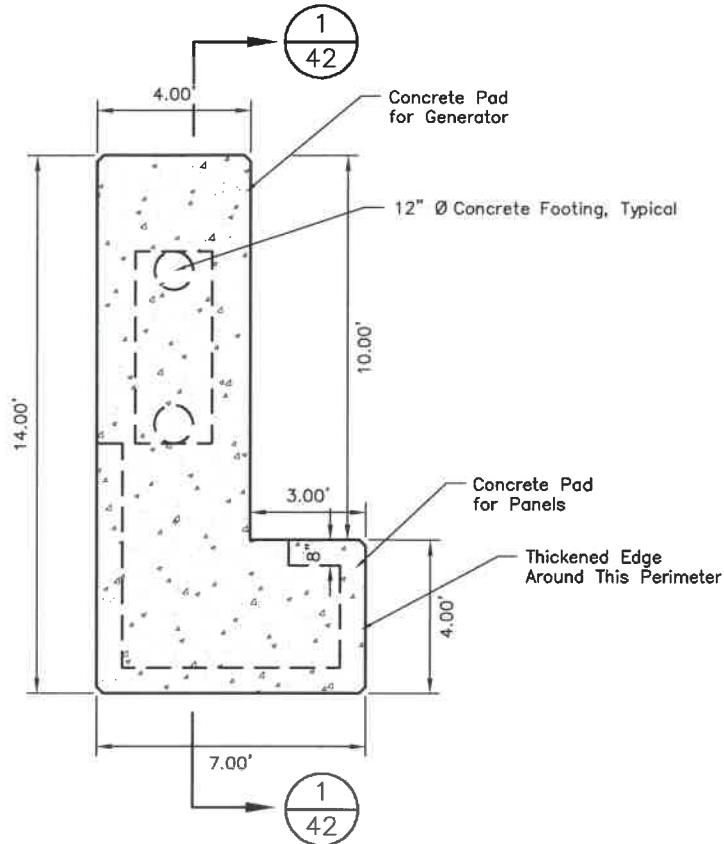
The undersigned hereby acknowledges receipt of Addendum Number 1 to the plans and specifications for the *MITCHELL DAILEY DRIVE LIFT STATION*.

FIRM NAME _____
BY _____
TITLE _____
DATE _____

ATTACH THIS SIGNED ADDENDUM NO. 1 TO THE BID FORM WHEN SUBMITTING.

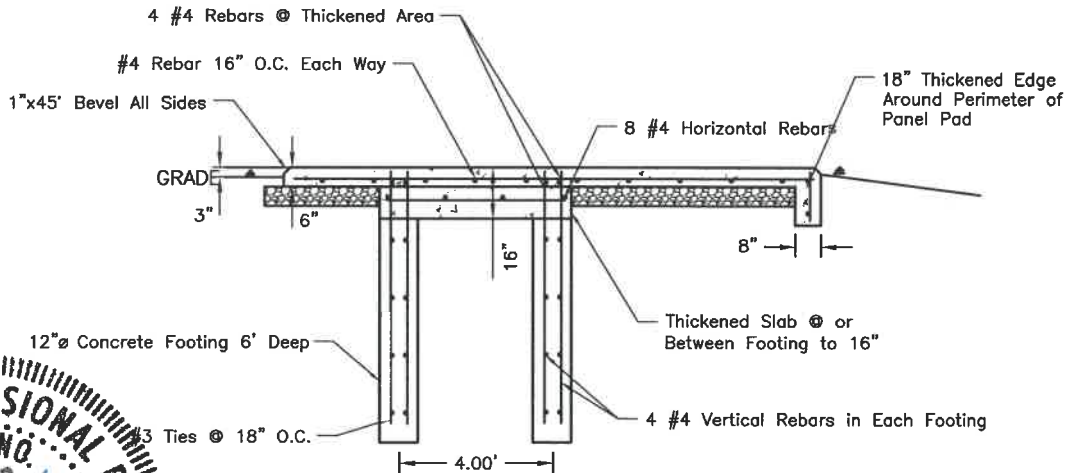
Notes:

- 1.) Wiring penetrations for generator and Automatic Transfer Switch shall be provided by Blockouts or conduit, as required.
- 2.) Refer to specifications for Generator requirements



GENERATOR CONCRETE PAD — PLAN VIEW

SCALE 1" = 5'



SECTION 1/42
SCALE 1" = 5'

Addendum #1



SPN

& Associates

Engineers, Planners and Surveyors

2100 North Sanborn Blvd. - P.O. Box 398 Mitchell, South Dakota 57301

Phone: (605) 996-7761 Fax: (605) 996-0015