



February 15, 2018

RE: LIFT STATION IMPROVEMENTS
WINNER, SOUTH DAKOTA
SPN #14605

BID LETTING: TUESDAY, FEBRUARY 20, 2018 @ 2:00 PM

ADDENDUM NUMBER 1

The following modifications are to be made to the plans and specifications for the Lift Station Improvements Project.

CDBG Special Provisions, Part M, Wage Determination:

Replace the wage determination with the attached current wage determination.

Section 11307, Paragraph 2.01 A:

Note that Grundfos (Yeomans) Series 6235 is added as an approved equal.

Section 11307, Paragraph 2.01 C and 2.01 K 3:

Note that a single mechanical seal without the water and filter flush system can be provided when approved by the Engineer.

Section 11307, Paragraph 2.01 G 4 shall be deleted.

Section 11307, Paragraph 2.03. F 2 shall be deleted and replaced with the following:

2. The variable frequency drives shall be wall mounted in the manufacturer's standard NEMA 1 enclosure.

Section 11307, Paragraph 2.07 A through C shall be deleted and replaced with the following:

- A. The sump pump shall operate on 115-volt, single phase, 60-hertz power. The minimum motor horsepower shall be 1.0 HP. The pump and switch control system shall be suitable for operation under complete submergence. The unit shall be capable of discharging not less than 40 gpm at 35 feet of dynamic head.
- B. The motor housing, pump body, impellor and shaft shall be constructed of stainless steel.
- C. The existing discharge piping from the pump into the wet well shall be removed and replaced with 1½ inch Schedule 40 PVC pipe. The discharge piping should tee off with two PVC ball valves to discharge outside of the building at two feet above ground level. The piping shall include two check valves and one union for disassembly. An enclosure of heavy mesh shall be fitted over the sump to keep out debris.

Section 15150, Paragraph 3.01. Add Paragraph 3.01 C following 3.01 B:

- C. The flow meter control panels shall be remote mounted on the nearest wall adjacent to the flow meters in the lower level.

Section 16940, Paragraph 2.06 A shall be deleted and replaced with the following:

- A. A directional Yagi antenna, lightning arrestor and SCADA panel will be provided by the SCADA provider. An antenna mounting mast will be installed by the City on the side of the existing lift station building. The Contractor shall install the antenna including the grounding rod, lightning arrestor and cable to the SCADA panel. A 120-volt power supply shall be provided to the SCADA panel as required.

Plan Sheet 6 shall be replaced with the attached plan sheet.

All other items of the plans and specifications remain unchanged.



Camden A Hofer

Camden A. Hofer, Project Engineer
Schmucker, Paul, Nohr & Associates

The undersigned hereby acknowledges receipt of Addendum Number 1 to the plans and specifications.

FIRM NAME _____
BY _____
TITLE _____
DATE _____

ATTACH THIS SIGNED ADDENDUM NO. 1 TO THE BID FORM WHEN SUBMITTING.

General Decision Number: SD180001 01/05/2018 SD1

Superseded General Decision Number: SD20170001

State: South Dakota

Construction Types: Heavy and Highway

Counties: South Dakota Statewide.

HEAVY AND HIGHWAY CONSTRUCTION PROJECTS

Note: Under Executive Order (EO) 13658, an hourly minimum wage of \$10.35 for calendar year 2018 applies to all contracts subject to the Davis-Bacon Act for which the contract is awarded (and any solicitation was issued) on or after January 1, 2015. If this contract is covered by the EO, the contractor must pay all workers in any classification listed on this wage determination at least \$10.35 per hour (or the applicable wage rate listed on this wage determination, if it is higher) for all hours spent performing on the contract in calendar year 2018. The EO minimum wage rate will be adjusted annually. Please note that this EO applies to the above-mentioned types of contracts entered into by the federal government that are subject to the Davis-Bacon Act itself, but it does not apply to contracts subject only to the Davis-Bacon Related Acts, including those set forth at 29 CFR 5.1(a)(2)-(60). Additional information on contractor requirements and worker protections under the EO is available at www.dol.gov/whd/govcontracts.

Modification Number	Publication Date
0	01/05/2018

* SUSD2015-001 08/16/2015

	Rates	Fringes
CARPENTER.....	\$ 22.77	0.00
CONCRETE FINISHER.....	\$ 21.41	0.00
ELECTRICIAN.....	\$ 22.79	0.00
LABORER		
Group 1.....	\$ 15.74	0.00
Group 2.....	\$ 17.51	0.00

Group 3.....	\$ 18.95	0.00
Group 5.....	\$ 22.77	0.00
Group 6.....	\$ 21.41	0.00

LABORER CLASSIFICATIONS:

GROUP 1: Air Tool Operator; Common Laborer; Landscape Worker, Flagger, Pilot Car Driver; Trucks under 26,000 GVW; Blue-top Checker, Materials Checker.

GROUP 2: Mechanic Tender; Pipe Layer (except culvert); Form Builder Tender; Special Surface Finish Applicator; Striping.

GROUP 3: Asphalt Plant Tender; Pile Driver Leadsman; Form Setter, Oiler/Greaser.

GROUP 5: Form Builder

GROUP 6: Grade Checker

PAINTER.....	\$ 21.41	0.00
--------------	----------	------

POWER EQUIPMENT OPERATOR:

Group 1.....	\$ 16.85	0.00
Group 2.....	\$ 18.13	0.00
Group 3.....	\$ 19.89	0.00
Group 4.....	\$ 20.30	0.00
Group 5.....	\$ 22.75	0.00

POWER EQUIPMENT OPERATORS CLASSIFICATIONS

GROUP 1: Concrete Paving Cure Machine; Concrete Paving Joint Sealer; Conveyor; Tractor (farm type with attachments); Self-Propelled Broom; Concrete Routing Machine; Paver Feeder; Pugmill; Skid Steer.

GROUP 2: Bull Dozer 80 HP or less; Front End Loader 1.25 CY or less; Self-Propelled Roller (except Hot Mix); Sheepsfoot/50 Ton Pneumatic Roller; Pneumatic Tire Tractor or Crawler (includes Water Wagon and Power Spray Units); Wagon Drill; Air Trac; Truck Type Auger; Concrete Paving Saw.

GROUP 3: Asphalt Distributor; Bull Dozer over 80 HP; Concrete Paving Finishing Machine; Backhoes/Excavators 20 tons or less; Crusher (may include internal screening plant); Front End Loader over 1.25 CY; Rough Motor Grader; Self-Propelled Hot Mix Roller; Push Tractor; Euclid or Dumpster; Material Spreader; Rumble Strip Machine.

GROUP 4:Asphalt Paving Machine Screed; Asphalt Paving Machine; Cranes/Derricks/Draglines/Pile Drivers/Shovels 30 to 50 tons;

Backhoes/Excavators 21 to 40 tons; Maintenance Mechanic; Scrapers; Concrete Pump Truck.

GROUP 5:Asphalt Plant; Concrete Batch Plant; Backhoes/Excavators over 40 tons; Cranes/Derricks/Draglines/Pile Drivers/Shovels over 50 tons; Heavy Duty Mechanic; Finish Motor Grader; Automatic Fine Grader; Milling Machine; Bridge Welder.

TRUCK DRIVER

Group 1.....	\$ 16.57	0.00
Group 2.....	\$ 18.82	0.00

TRUCK DRIVERS CLASSIFICATIONS

GROUP 1: Tandem Truck without trailer or pup; Single Axle Truck over 26,000 GVW with trailer.

GROUP 2: Semi-Tractor and Trailer; Tandem Truck with Pup.

WELDERS - Receive rate prescribed for craft performing operation to which welding is incidental.

=====

Note: Executive Order (EO) 13706, Establishing Paid Sick Leave for Federal Contractors applies to all contracts subject to the Davis-Bacon Act for which the contract is awarded (and any solicitation was issued) on or after January 1, 2017. If this contract is covered by the EO, the contractor must provide employees with 1 hour of paid sick leave for every 30 hours they work, up to 56 hours of paid sick leave each year. Employees must be permitted to use paid sick leave for their own illness, injury or other health-related needs, including preventive care; to assist a family member (or person who is like family to the employee) who is ill, injured, or has other health-related needs, including preventive care; or for reasons resulting from, or to assist a family member (or person who is like family to the employee) who is a victim of, domestic violence, sexual assault, or stalking. Additional information on contractor requirements and worker protections under the EO is available at www.dol.gov/whd/govcontracts.

Unlisted classifications needed for work not included within the scope of the classifications listed may be added after award only as provided in the labor standards contract clauses (29CFR 5.5 (a) (1) (ii)).

The body of each wage determination lists the classification and wage rates that have been found to be prevailing for the cited type(s) of construction in the area covered by the wage determination. The classifications are listed in alphabetical order of "identifiers" that indicate whether the particular rate is a union rate (current union negotiated rate for local), a survey rate (weighted average rate) or a union average rate (weighted union average rate).

Union Rate Identifiers

A four letter classification abbreviation identifier enclosed in dotted lines beginning with characters other than "SU" or "UAVG" denotes that the union classification and rate were prevailing for that classification in the survey. Example: PLUM0198-005 07/01/2014. PLUM is an abbreviation identifier of the union which prevailed in the survey for this classification, which in this example would be Plumbers. 0198 indicates the local union number or district council number where applicable, i.e., Plumbers Local 0198. The next number, 005 in the example, is an internal number used in processing the wage determination. 07/01/2014 is the effective date of the most current negotiated rate, which in this example is July 1, 2014.

Union prevailing wage rates are updated to reflect all rate changes in the collective bargaining agreement (CBA) governing this classification and rate.

Survey Rate Identifiers

Classifications listed under the "SU" identifier indicate that no one rate prevailed for this classification in the survey and the published rate is derived by computing a weighted average rate based on all the rates reported in the survey for that classification. As this weighted average rate includes all rates reported in the survey, it may include both union and non-union rates. Example: SULA2012-007 5/13/2014. SU indicates the rates are survey rates based on a weighted average calculation of rates and are not majority rates. LA indicates the State of Louisiana. 2012 is the year of survey on which these classifications and rates are based. The next number, 007 in the example, is an internal number used in producing the wage determination. 5/13/2014 indicates the survey completion date for the classifications and rates under that identifier.

Survey wage rates are not updated and remain in effect until a new survey is conducted.

Union Average Rate Identifiers

Classification(s) listed under the UAVG identifier indicate that no single majority rate prevailed for those classifications; however, 100% of the data reported for the classifications was union data. EXAMPLE: UAVG-OH-0010 08/29/2014. UAVG indicates that the rate is a weighted union average rate. OH indicates the state. The next number, 0010 in the example, is an internal number used in producing the wage determination. 08/29/2014 indicates the survey completion date for the classifications and rates under that identifier.

A UAVG rate will be updated once a year, usually in January of each year, to reflect a weighted average of the current negotiated/CBA rate of the union locals from which the rate is based.

WAGE DETERMINATION APPEALS PROCESS

1.) Has there been an initial decision in the matter? This can be:

- * an existing published wage determination
- * a survey underlying a wage determination
- * a Wage and Hour Division letter setting forth a position on a wage determination matter
- * a conformance (additional classification and rate) ruling

On survey related matters, initial contact, including requests for summaries of surveys, should be with the Wage and Hour Regional Office for the area in which the survey was conducted because those Regional Offices have responsibility for the Davis-Bacon survey program. If the response from this initial contact is not satisfactory, then the process described in 2.) and 3.) should be followed.

With regard to any other matter not yet ripe for the formal process described here, initial contact should be with the Branch of Construction Wage Determinations. Write to:

Branch of Construction Wage Determinations
Wage and Hour Division

U.S. Department of Labor
200 Constitution Avenue, N.W.
Washington, DC 20210

2.) If the answer to the question in 1.) is yes, then an interested party (those affected by the action) can request review and reconsideration from the Wage and Hour Administrator (See 29 CFR Part 1.8 and 29 CFR Part 7). Write to:

Wage and Hour Administrator
U.S. Department of Labor
200 Constitution Avenue, N.W.
Washington, DC 20210

The request should be accompanied by a full statement of the interested party's position and by any information (wage payment data, project description, area practice material, etc.) that the requestor considers relevant to the issue.

3.) If the decision of the Administrator is not favorable, an interested party may appeal directly to the Administrative Review Board (formerly the Wage Appeals Board). Write to:

Administrative Review Board
U.S. Department of Labor
200 Constitution Avenue, N.W.
Washington, DC 20210

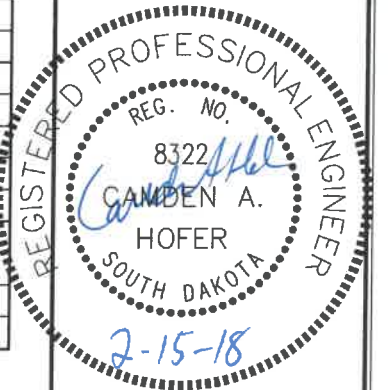
4.) All decisions by the Administrative Review Board are final.

=====

END OF GENERAL DECISION

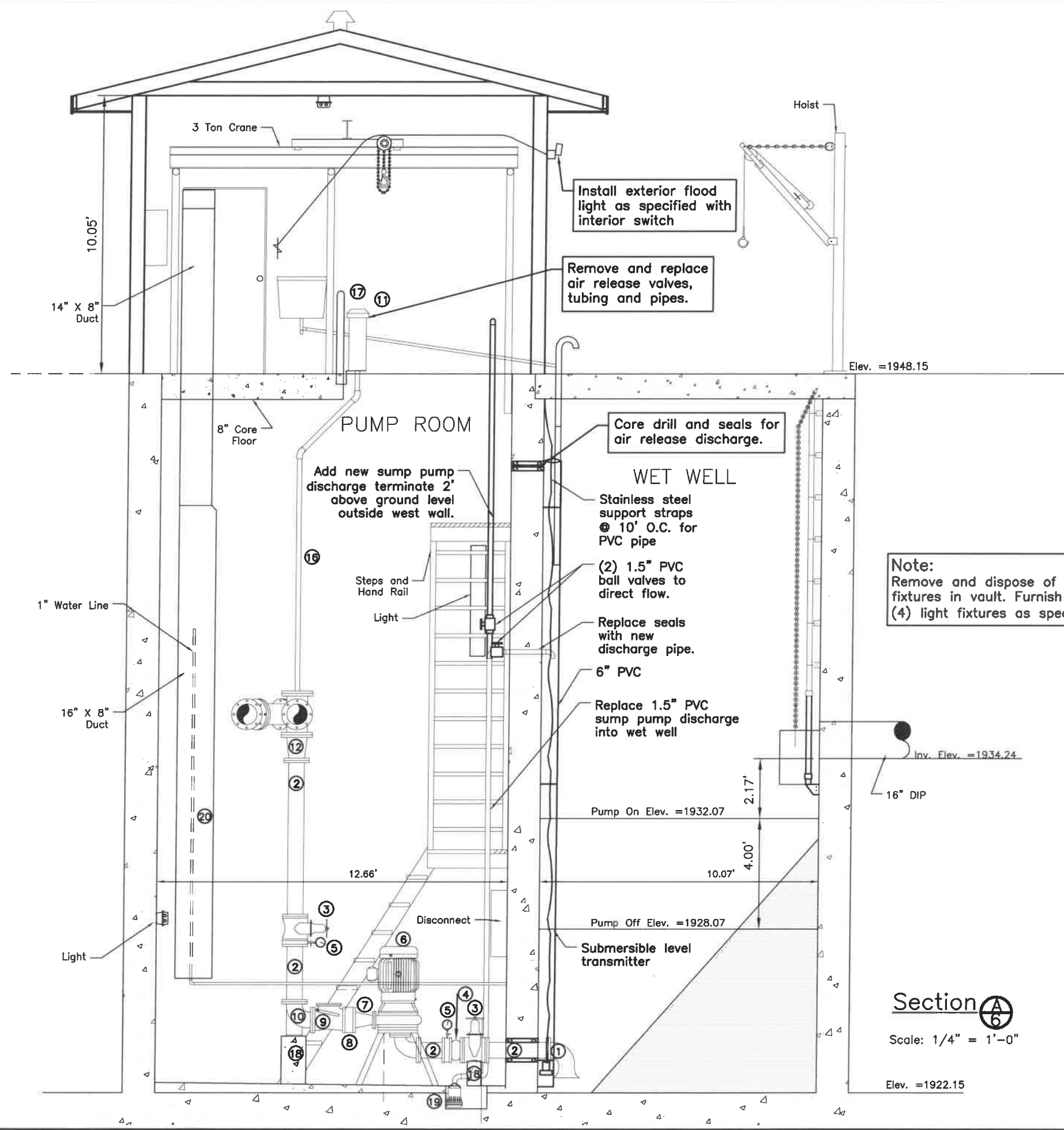
Certificate

I hereby certify that this plan, specification, or report was prepared by me or under my direct supervision and that I am a duly Registered Professional Engineer under the laws of the State of South Dakota.

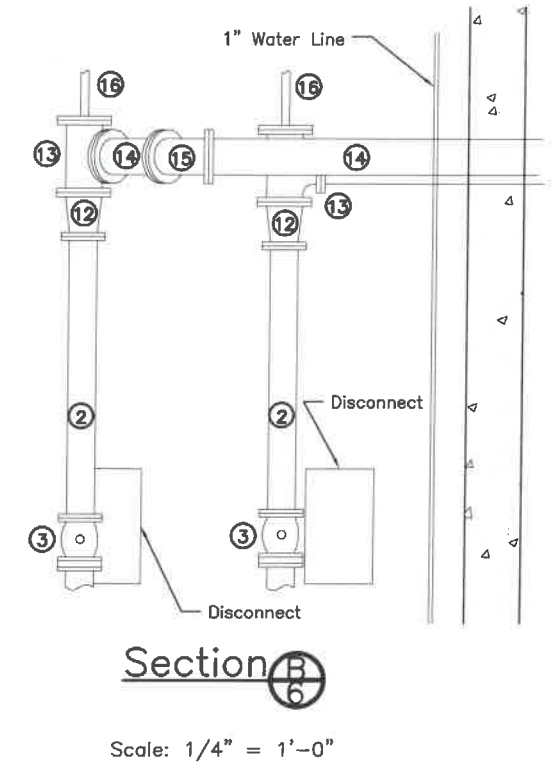


Removal Table of Pipe, Fittings, Valves and Related Items

ID	Description	Quantity
1	6" 90 Degree Bellmouth Bend	2 EA
2	6" Ductile Iron Pipe	21.9 LF
3	6" Gate Valve	4 EA
4	6" Expansion Joint	2 EA
5	6" Pressure Isolator Ring	4 EA
6	End Suction Pump/Vertical Motor Mount/6" x 4" Reducing Base Elbow	2 EA
7	6" x 4" Reducer	2 EA
8	6" Filter Flange	2 EA
9	6" Check Valve	2 EA
10	6" 90 Degree Base Elbow	2 EA
11	Air Release Valve	2 EA
12	8" x 6" Reducer	2 EA
13	8" Tee with 2" Tapped Blind Flange	2 EA
14	8" Ductile Iron Pipe	13.9 LF
15	8" 45 Degree Bend	1 EA
16	2" Galvanized Threaded Pipe	25 LF
17	3/4" Hose/Galvanized Pipe (ARV Discharge)	40 +/- LF
18	Concrete Pipe Supports	4 EA
19	Sump Pump	1 EA
20	Duct	12 LF



Note:
 Remove and dispose of existing light fixtures in vault. Furnish and install (4) light fixtures as specified



Section A
 Scale: 1/4" = 1'-0"
 Elev. = 1922.15

Revisions

02/15/18	Added sump pump discharge and transducer pipe. Revisions By DJR.
----------	--

Plan Horiz. Scale: 1/4" = 1'
 Drawn By: DJR
 Checked By: CAH
 Date: 11/16/2017
 Project No.: 14605
 File Name: Winner Lift Station

Project Name:
Lift Station Improvements

Located in:
Winner, South Dakota

Sheet Name:
Existing Lift Station Removals

Sheet Number: 6	Total Sheets: 12
---------------------------	----------------------------